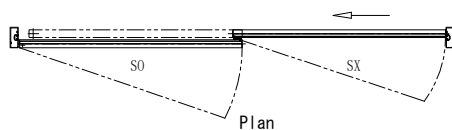
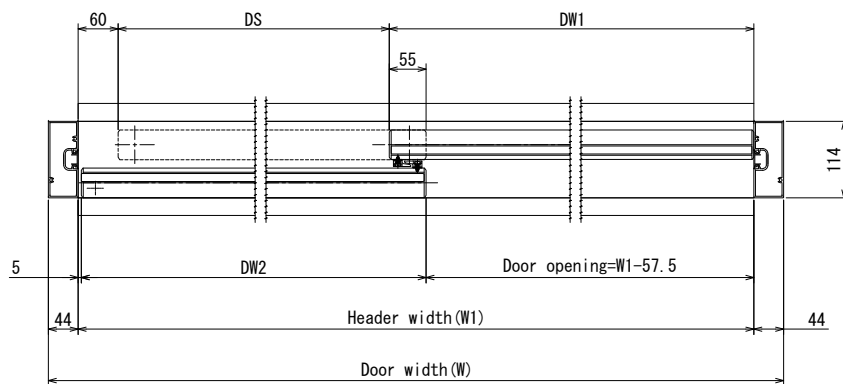


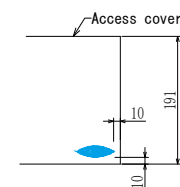
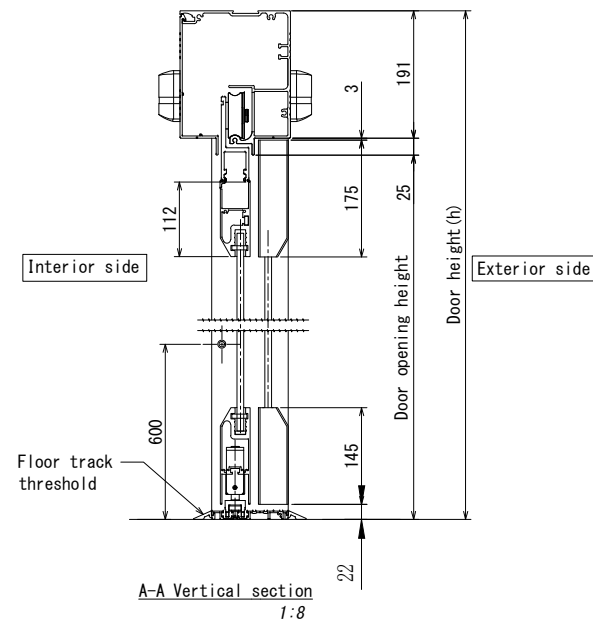
Exterior elevation
1:30



Access cover side(Interior)



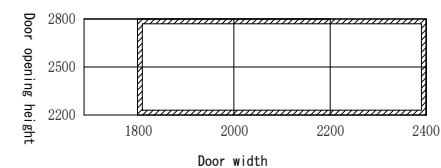
Horizontal section
1:8



Brand label

Specification

Item	Standard	Option
Door material	Aluminum	-
Glass	Tempered glass	Laminated glass
Glass thickness	12mm	-
Active sensor	NH-203	Option
Safety beam	NP-01	NP-80
Electric lock	-	Option
Floor lock	-	Option
Program switch	-	Option
Floor track threshold	Full length	Half length
Transom	-	Exist



Notes:

1.The bottom support wheel is required when the sliding door is wider than 1100mm or the door is larger than 90kg.

No.	Standard size				
	Door width	Door opening	Full breakout opening	Sliding door	Sidelite
01	2000	920	1801	975	1030
02	2400	1120	2201	1175	1230

NAME

GT-1175B0-F0-AG

Left hand