

HDS-4P Push Button Switch

For Multipurpose Toilet Door Unit

Universally designed door operation switch for public toilets achieves both harmony with toilet space and usability



HDS-4P Push Button Switch

For Multipurpose Toilet Door Unit

HDS-4P Push Button Switch

Universal design



[Inside]

Intelligibility and Usability

Universally designed from a range of aspects by incorporating expert opinions and conducting various verifications, the door operation switch is easy for anyone to use and thus is friendly to all users.

※Multipurpose Toilet shown above is RESTROOM ITEM01 manufactured and sold by TOTO LTD. in Japan.

Intelligibility

■ Guidance by illumination

- **The button to be pushed next lights up**

This helps users push the correct button without having to think.

※See the illustrative image of the operational flow on the reverse side.

- **Pushing button makes beep sound for confirmation of operation.**



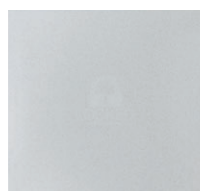
■ Due consideration for visual impediment

- **Due consideration for the visually impaired people**

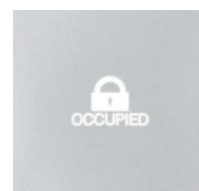
The character font and layout were determined with due consideration to users with visual impairments. Specifically, the buttons are protruded from the mounting surface to allow visually impaired users to easily recognize the buttons by feel. Also, pictographs are shown alongside ordinary characters on the buttons for higher palpability.

- **Higher visibility for people with red-green color vision deficiency**

Black push-buttons and white ones are used in combination to make them easily recognizable also for people with color vision deficiency. Embossed characters will be displayed in between the black and white buttons only when the toilet is in use, thereby clearly showing whether it is occupied or not.



When the toilet is not occupied
(No pictograph)



When the toilet is occupied/locked
(Inside pictograph is shown with "Locked".)



Usability

■ Due consideration to people in wheelchairs and the elderly

To make the buttons easier to push, the diameter of each button is set as large as 70 mm. Even people who are physically handicapped can easily and assuredly push the buttons with only a small amount of force.



HDS-4P

Push Button Switch

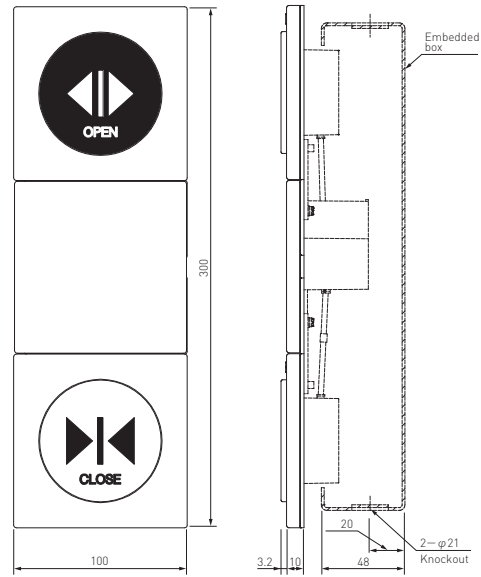
For Multipurpose Toilet Door Unit

Universally designed door operation switch for public toilets achieves both harmony with toilet space and usability

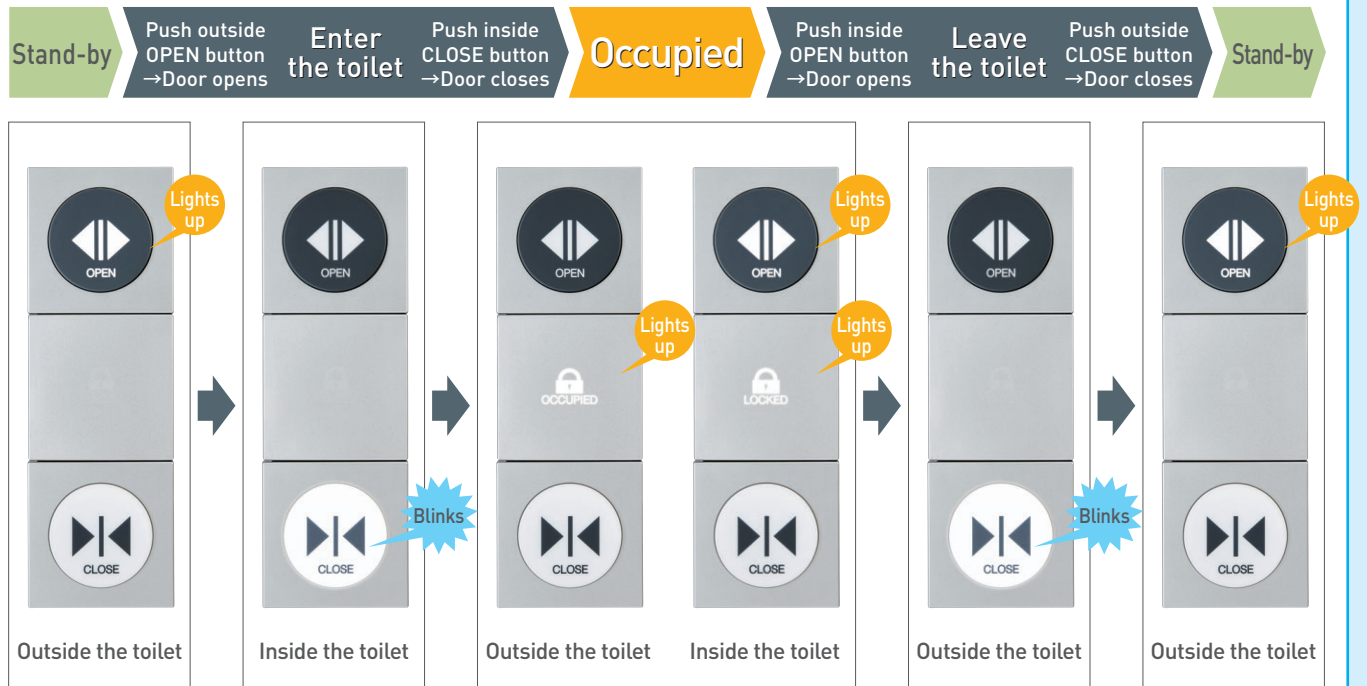
Specification

Product name	HDS-4P Push Button Switch
Detection method	Pressure detection (Push-button type)
Operation force	Approx. 5N
Indicator light	White LED
	Stand-by: Off Occupied: On
Installation	Embedded in the wall ※Option: exposed on the wall
Dimension (mm)	[Switch] W100×H300×D13 [Embedded box] W80×H280×D48 [Exposed box] W100×H300×D48
Material	[Switch] ABS resin [Embedded box] SPCC (Steel black painting) [Exposed box] SPCC (Steel metal painting)
Remark	Can be installed vertically or horizontally

Dimensions (mm)



Operation image



Nabtesco Corporation

Accessibility Innovations Company

Address : JA Kyosai Bldg., 7-9,
Hirakawacho 2-chome,
Chiyoda-ku, Tokyo,
102-0093, Japan

Phone : +81(0)3-5213-1157
Fax : +81(0)3-5213-1173



ISO9001 • ISO14001 Certified



For further details, please contact:

<https://nabco.nabtesco.com/en/>

All specifications herein are subject to change without notice

CAT.No. D680 0401 1702 02RI