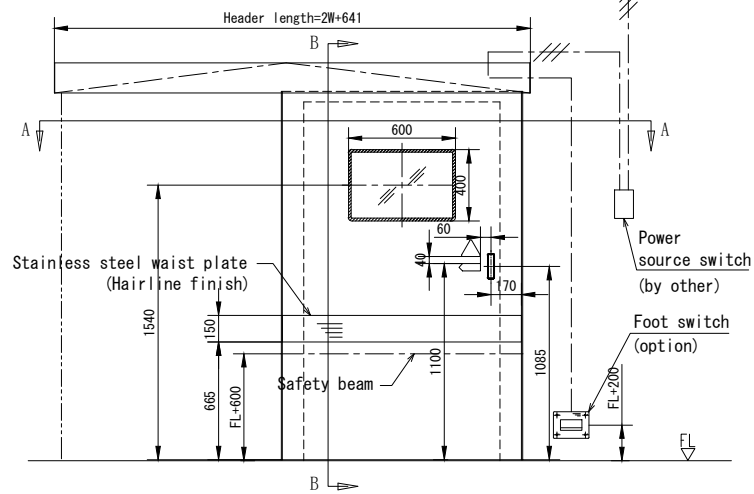
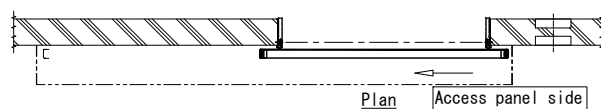


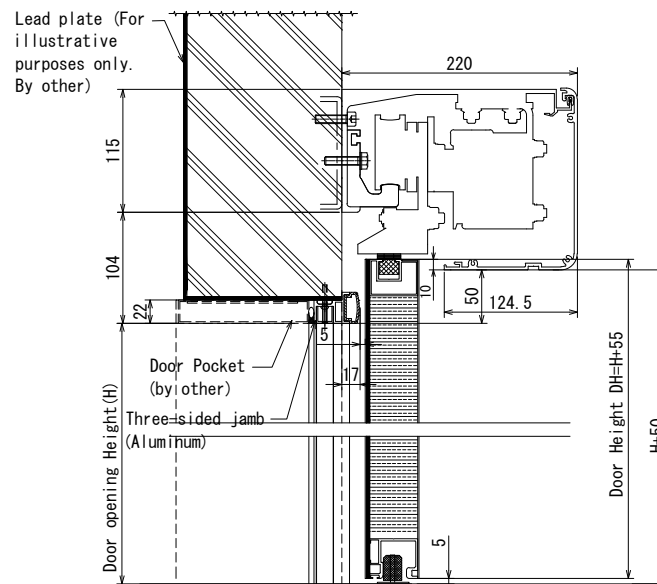
Power supply not less than 2.5A  
Incl. ground wire into operation case  
(by other)



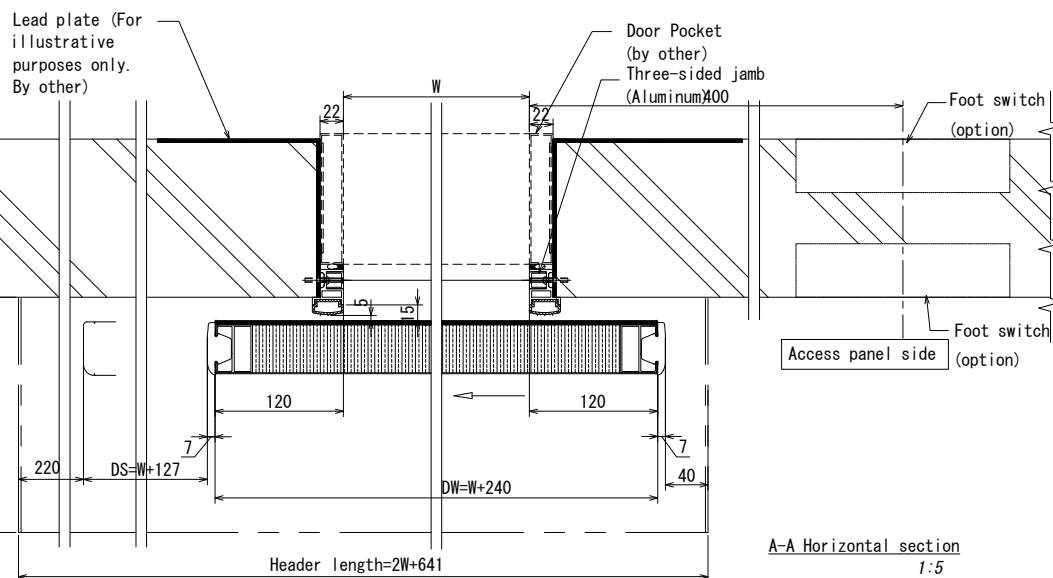
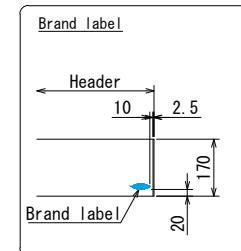
Exterior elevation (Right hand)  
1:30



Plan  
Access panel side



B-B Vertical section  
1:5

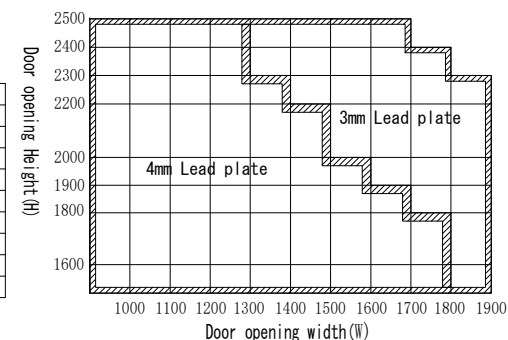


A-A Horizontal section  
1:5

#### Specification

Item	Standard	Option
Door leaf	Steel (painting)	Aluminum (painting)
Lead Plate	3mm	4mm
Header	Aluminum/Silver	Painting
Three-sided jamb	Aluminum/Silver	Painting
Operator	VS-150	-
Safety beam	NP-01	NP-80
Foot switch	Ft-80	Option
Handle	Recessed handle	Option
Electric lock	-	Option

Scope: Maximum weight of door : 350Kg



Remark: It need to adjust the height of waist plate, when opening height is over 2200mm.

NAME: MD-SX2-SR  
Right hand sliding door