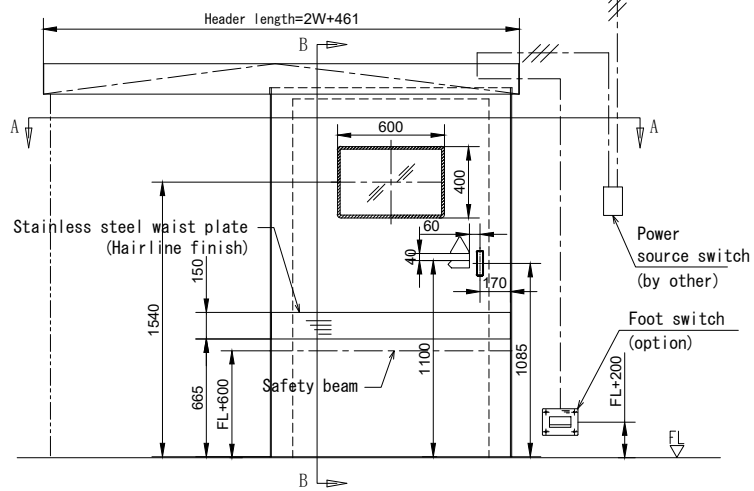
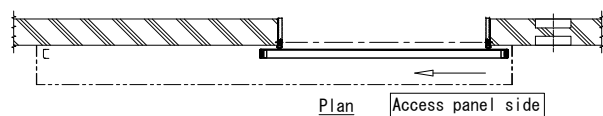


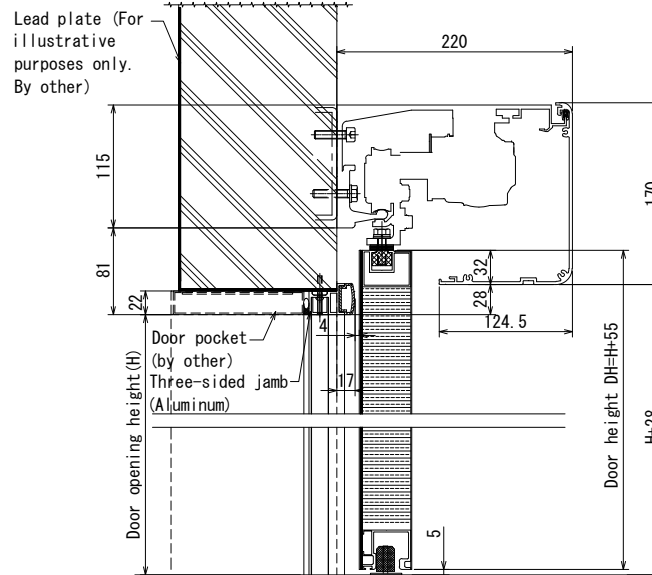
Power supply not less than 2.5A
Incl. ground wire into operation case
(by other)



Exterior elevation (Right hand)
1:30

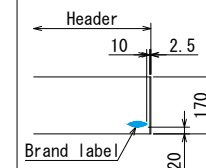


Plan Access panel side

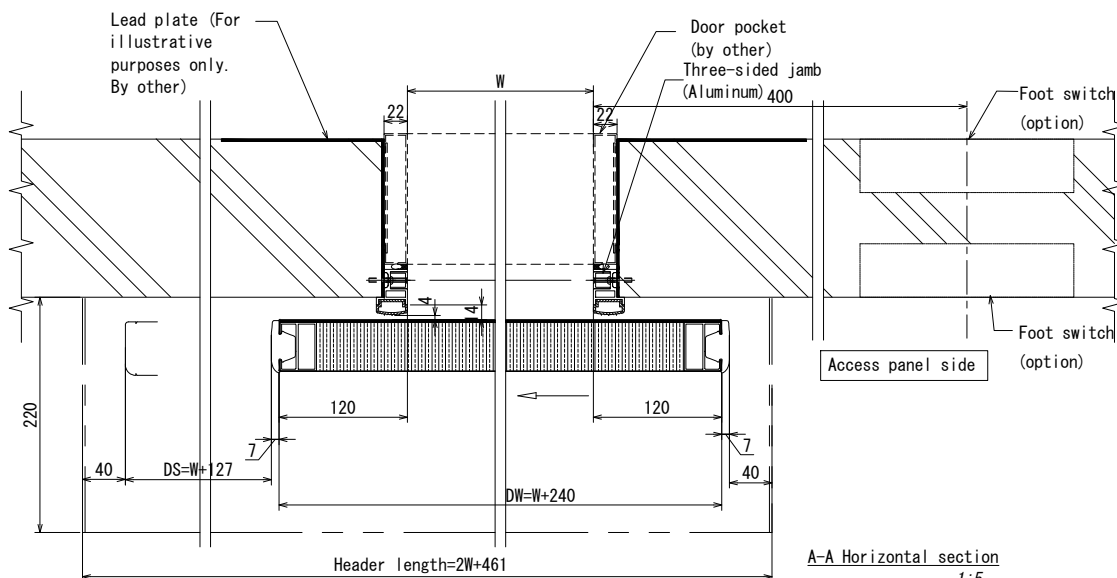


B-B Vertical section
1:5

Brand label



Lead plate (For illustrative purposes only. By other)

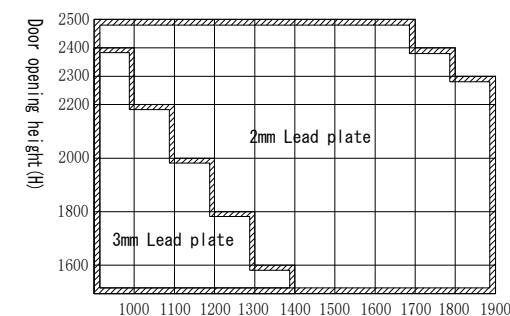


A-A Horizontal section
1:5

Specification

Item	Standard	Option
Door leaf	Steel (painting)	Aluminum (painting)
Lead Plate	2mm	3mm
Header	Aluminum/Silver	Painting
Three-sided jamb	Aluminum/Silver	Painting
Operator	VS-150	-
Safety beam	NP-01	NP-80
Foot switch	FT-80	Option
Handle	Recessed handle	Option
Electric lock	-	Option

Scope: Maximum weight of door : 250Kg



Remark: It need to adjust the height of waist plate, when opening height is over 2200mm.

NAME: MD-SX1-SR
Right hand sliding door