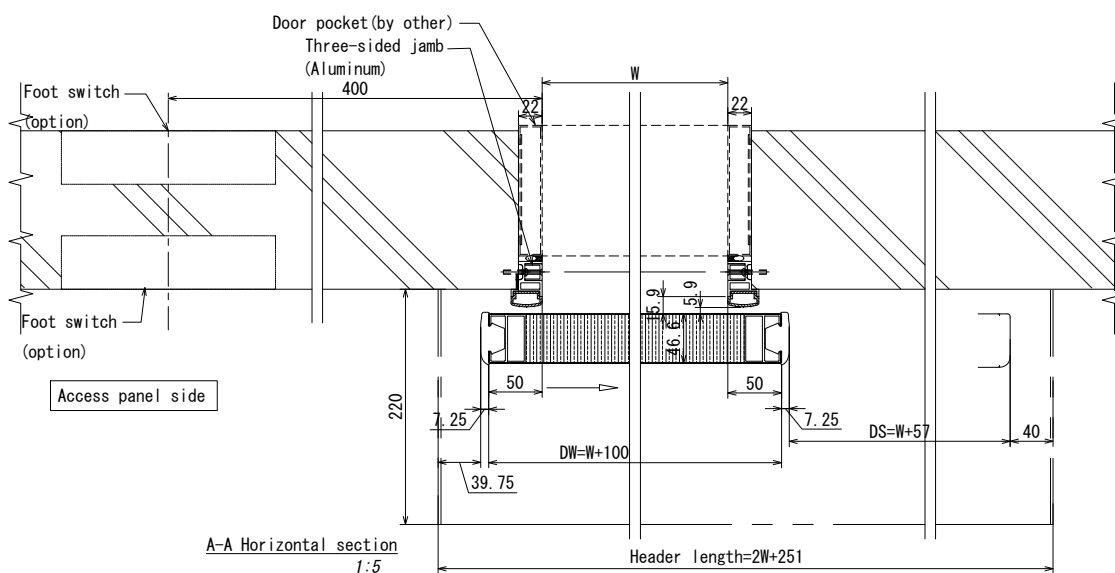
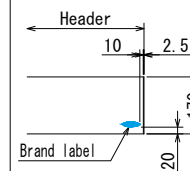


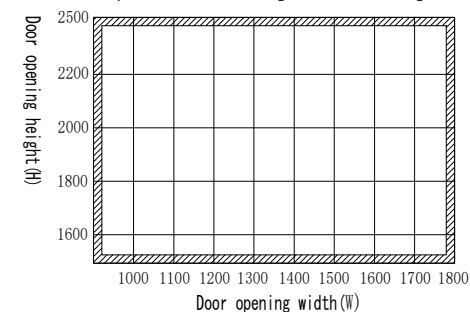
Brand label



Specification

Item	Standard	Option
Door leaf	Steel (painting)	Aluminum (painting)
Header	Aluminum/Silver	Painting
Three-sided jamb	Aluminum/Silver	Painting
Safety beam	NP-01	NP-80
Foot switch	Ft-80	Option
Handle	Recessed handle	Option
Electric lock	-	Option

Scope: Maximum weight of door: 120Kg



Remark: It need to adjust the height of waist plate, when opening height is over 2200mm.

NAME

MD-SN-SL

Left hand sliding door