

NOTE
- Use safety glass.

1. Attach the warning label and automatic door label to the door.
2. Attach more than 1 label to the door at least, positioning center of the label from FL+750mm to 1750mm in height.
3. To ensure safety, secure the dimension below.
 $Y \geq 200 \text{ mm}$
If it is difficult to secure above dimension, take another measure, for example installing protection sensor.

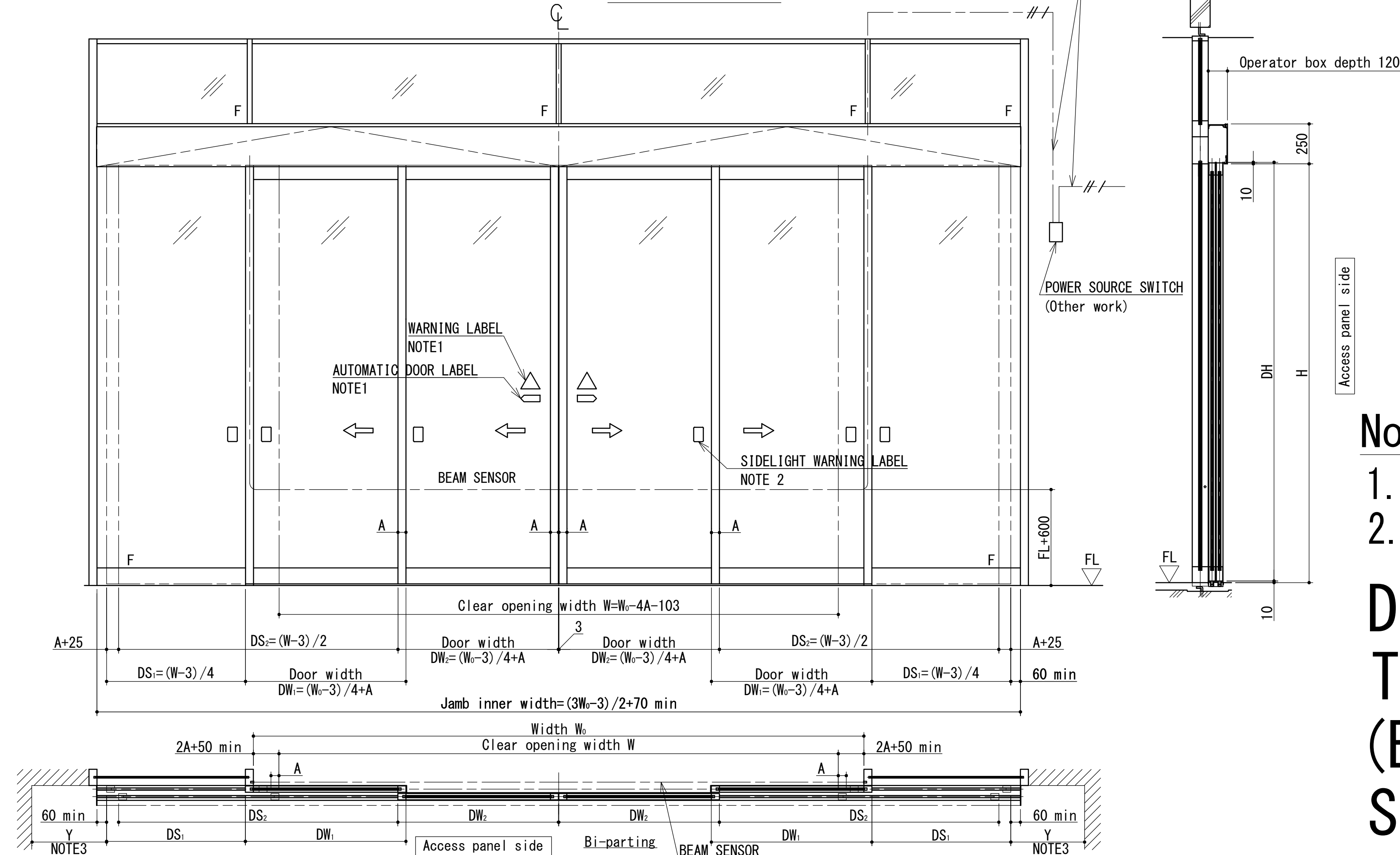
Specification

Opening Method	Single Sliding			Bi-parting			
	VS-60	VS-85	VS-150	VS-60	VS-85	VS-150	
Door Operator	Type S						
Railbase	Type S						
Applicability	Door Mass (kg) x Door q'ty	50 x 2	65 x 2	100 x 2	40 x 4	55 x 4	100 x 4
	Door width : DW (mm)	500-600	500-800	500-1000	500-550	500-650	500-1000
	Ratio of DH/DW	4.2 or less					
Door operating speed (m/s)	0.1 - 0.7						
Power supply	230VAC±10%, 50/60Hz, 2.5A						
Available ambient conditions	Ambient temperature	-20 to 50°C					
	Ambient humidity	20 to 90% RH (no icing or condensation)					
	Electromagnetic field immunity	Industrial environment (IEC/JIS C 61000-6-2)					

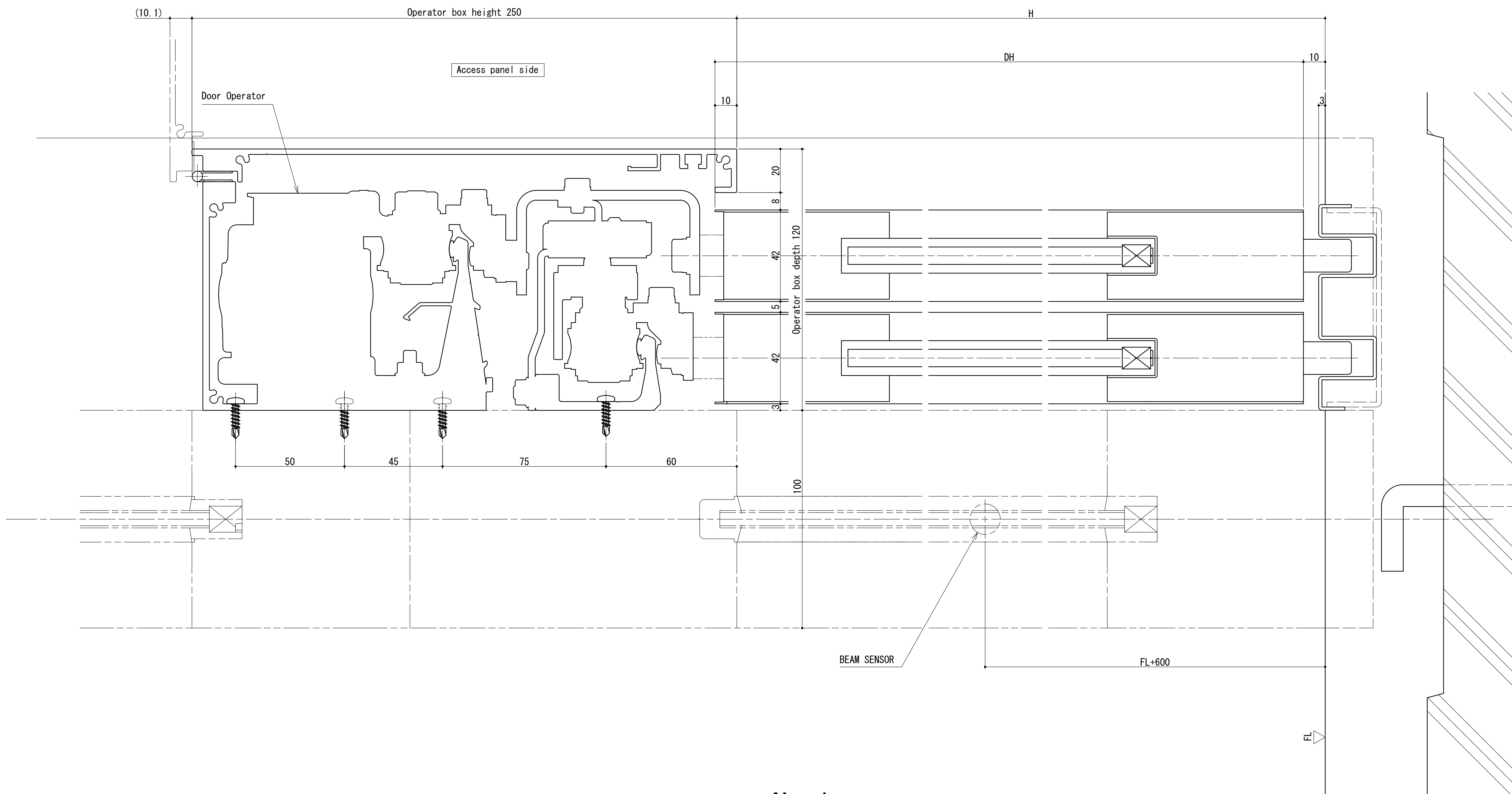
Notice

1. All drawings herein are subject to change without notice.
2. For further details, please contact NABCO sales distributors.

Drawing of V-60/85/150TL-S Telescopic door Surface mounted type (Elevation) Scale 1:20



初版	2019.08.01
改訂No.	改訂日時
番号 No.	
1DK202037	



Notice

1. All drawings herein are subject to change without notice.
2. For further details, please contact NABCO sales distributors.

**Drawing of V-60/85/150TL-S
Telescopic door Surface mounted type
(Section)
Scale 1:1**

初版	2019.08.01
改訂No.	改訂日時
番号 NO.	1DK202037