

### Specification

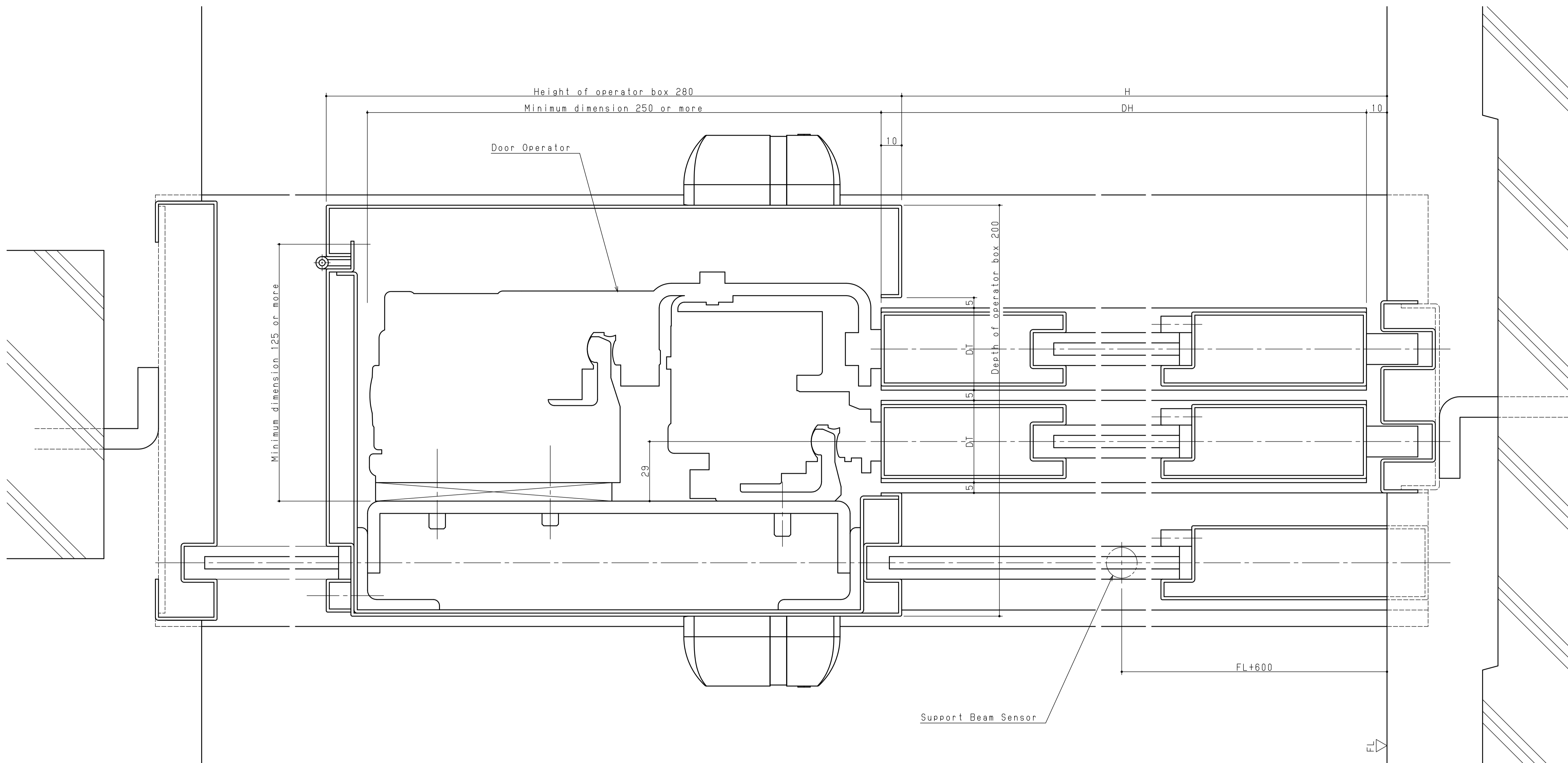
Door Operator	DS-75	DS-150	DS-75	DS-150
Opening Method	Bi-parting		Single sliding	
Applicability	Applicable Door Mass x Door q'ty	55x4	100x4	65x2
	Door area DW XDH (㎡)	1.9	2.2	2.1
	Applicable Door Width:DW (mm)	500~650	500~1000	500~800
	Rate of DH/DW	4.2		
Average speed	~0.35m/sx2		~0.38m/s	
Power supply	100VAC·5A			

### Notice

- All drawings herein are subject to change without notice.
- For further details, please contact NABCO sales distributor.

Drawing of DS-D2 Telescopic sliding door (Elevation)  
Scale 1:20

改訂No.	改訂日時
番号 NO.	
1HP120065-01	
<b>Nabtesco</b> Nabtesco Corporation	



Notice

- 1. All drawings herein are subject to change without notice.
- 2. For further details, please contact NABCO sales distributors

Drawing of DS-D2 Telescopic  
sliding door  
(Section)  
Scale 1:20

改訂No.	改訂日時
番号 NO.	
1HP120065-02	
<b>Nabtesco</b> Nabtesco Corporation	

参考図書