

**NOTE**  
 - Use safety glass.

1. Attach the warning label and automatic door label to the door.
2. Attach more than 1 label to the door at least, positioning center of the label from FL+750mm to 1750mm in height.
3. To ensure safety, secure the dimension below.  
 $Y \geq 200 \text{ mm}$   
 If it is difficult to secure above dimension, take another measure, for example installing safety fence.

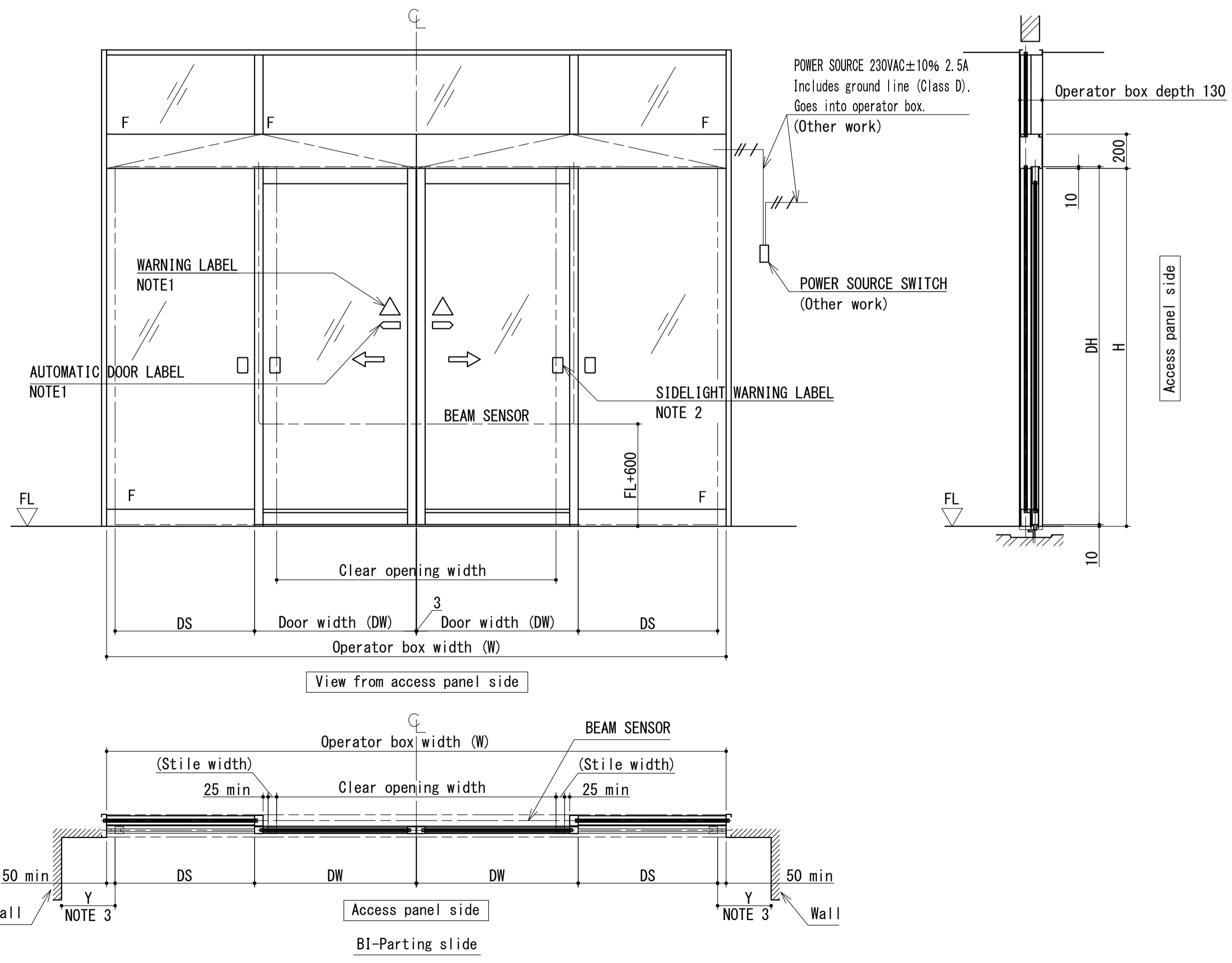
### Specification

Opening Method	Single Sliding			Bi-parting					
	VS-60	VS-85	VS-150	VS-60	VS-85	VS-150			
Door Operator	VS-60	VS-85	VS-150	VS-60	VS-85	VS-150			
Railbase	Type N		Type F	Type N		Type F			
Applicability	Door Mass (kg) x Door q'ty	75 x 1	100 x 1	120 x 1	150 x 1	60 x 2	85 x 2	120 x 2	150 x 2
	Door width : DW (mm)	650-2500							
	Ratio of DH/DW	4 or less							
	Door operation speed (m/s)	0.1 - 0.7							
	Power supply	230VAC±10%, 50/60Hz, 2.5A							
Available ambient conditions	Ambient temperature	-20 to 50°C							
	Ambient humidity	20 to 90% RH (no icing or condensation)							
	Electromagnetic field immunity	Industrial environment (IEC/JIS C 61000-6-2)							

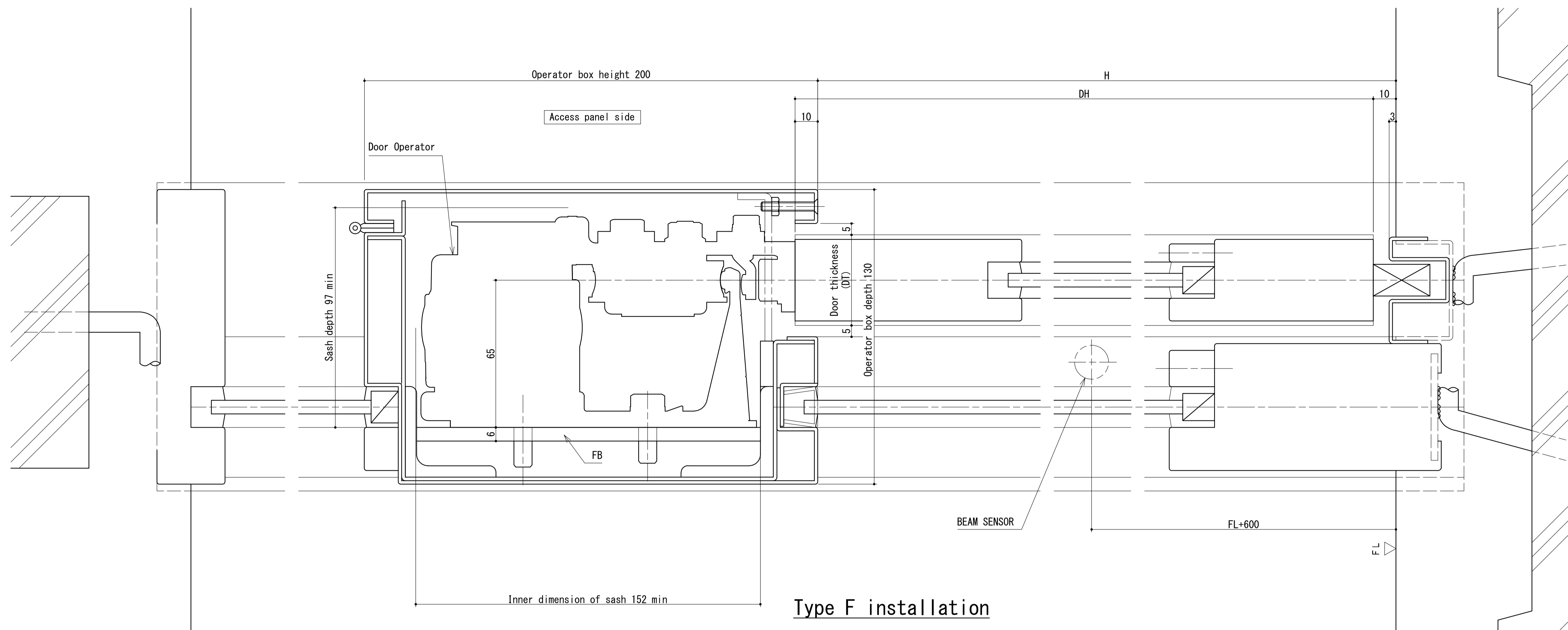
### Notice

1. All drawings herein are subject to change without notice.
2. For further details, please contact NABCO sales distributors.

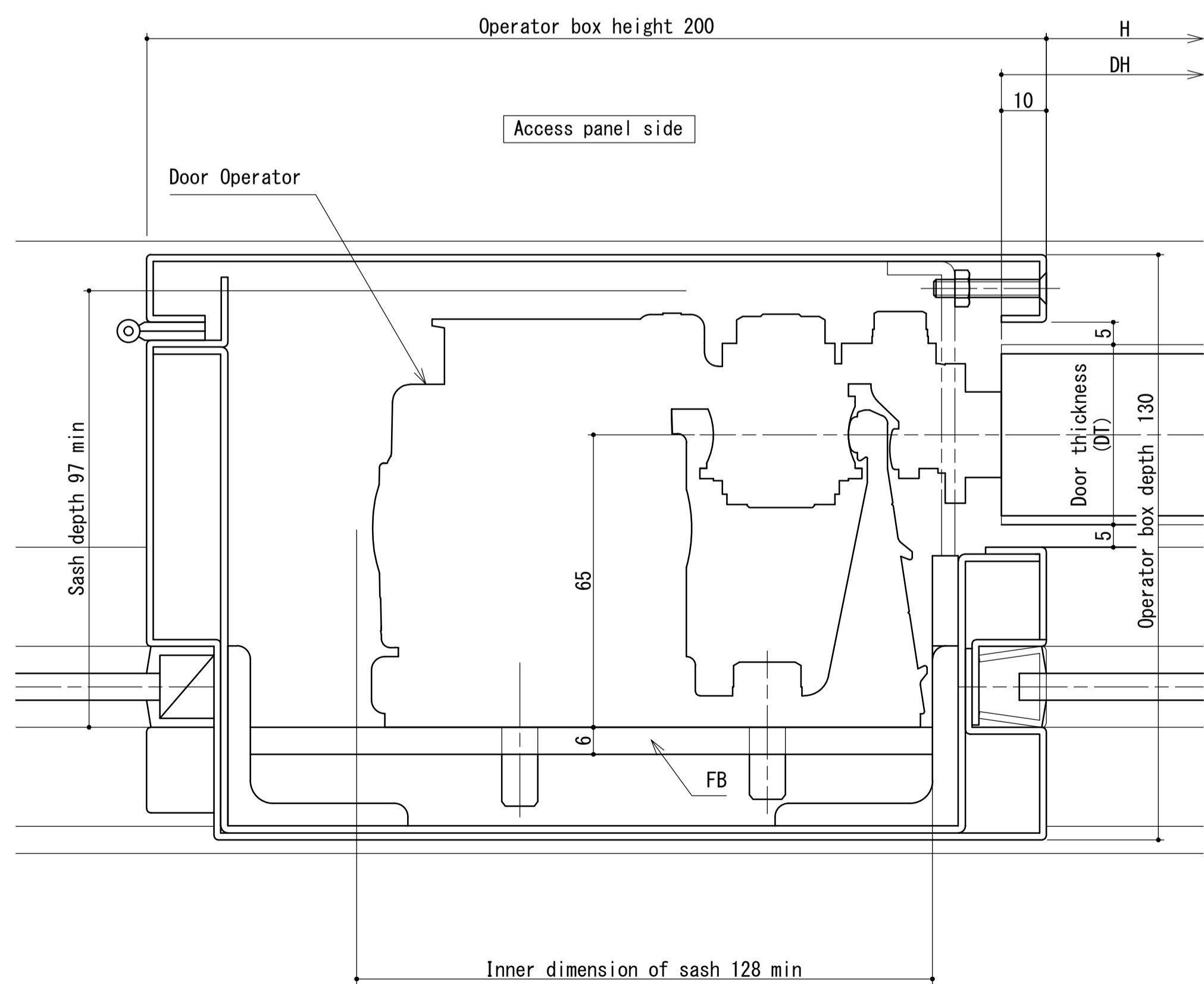
Drawing of V-60/85/150SL-F  
 Steel/Stainless sash (FB) mounted type  
 (Elevation)  
 Scale 1:20



-	-
初版	2019.08.01
改訂No.	改訂日時
番号 No.	
1DK202034	



Type F installation



Type N installation

**Notice**

1. All drawings herein are subject to change without notice.
2. For further details, please contact NABCO sales distributors.

**Drawing of V-60/85/150SL-F  
Steel/Stainless sash (FB) mounted type  
(Section)  
Scale 1:1**

初版	2019.08.01
改訂No.	改訂日時
番号 No.	1DK202034