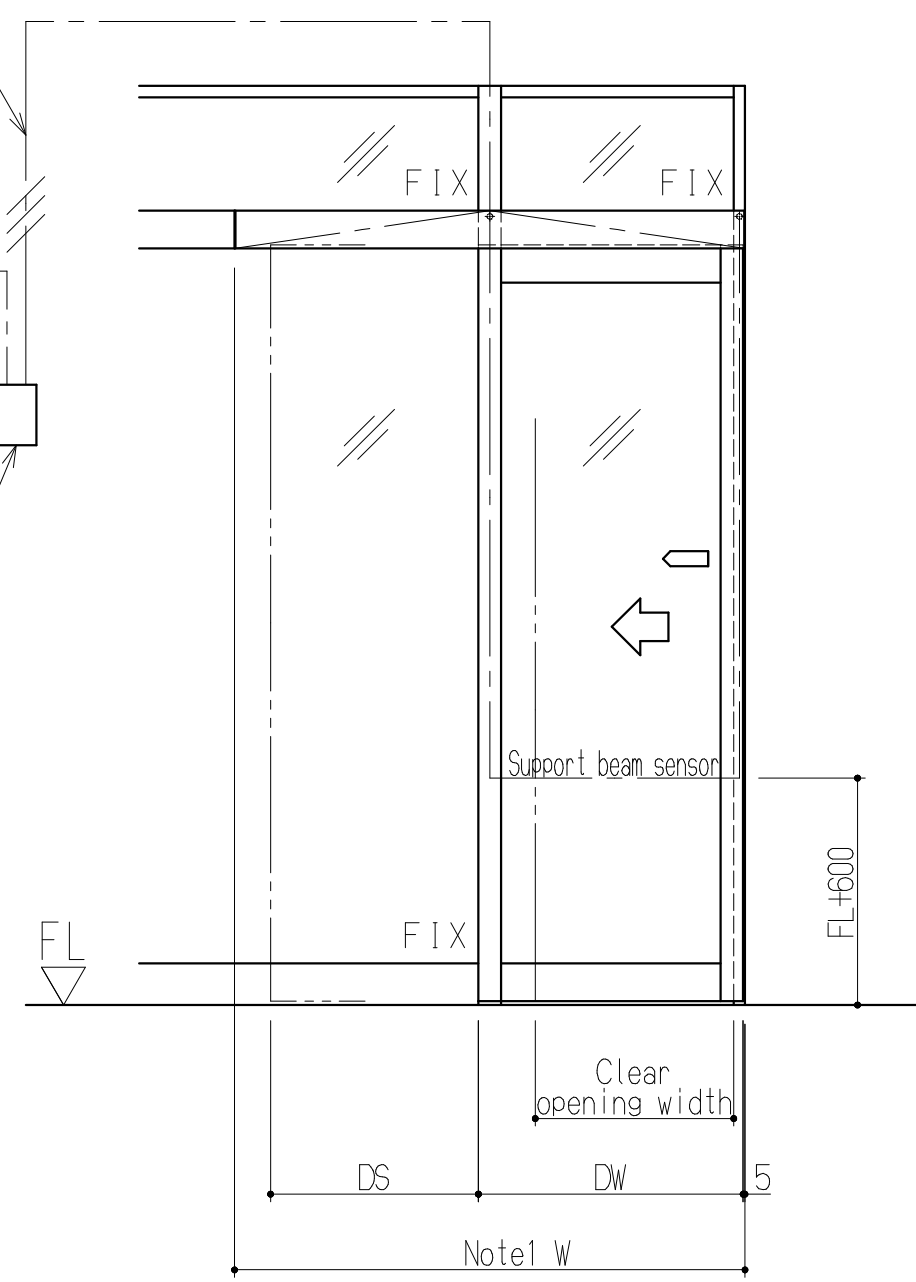
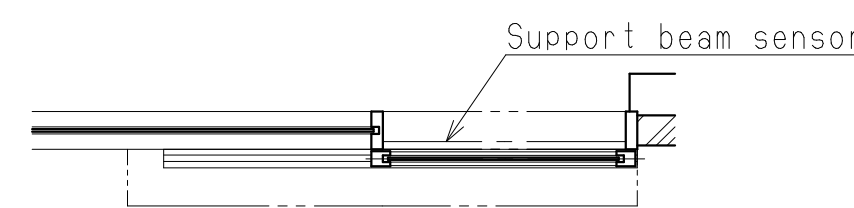


Power source 200~230VAC 2.5A  
Includes Earth line  
(Other work)

Power source switch  
(Other work)

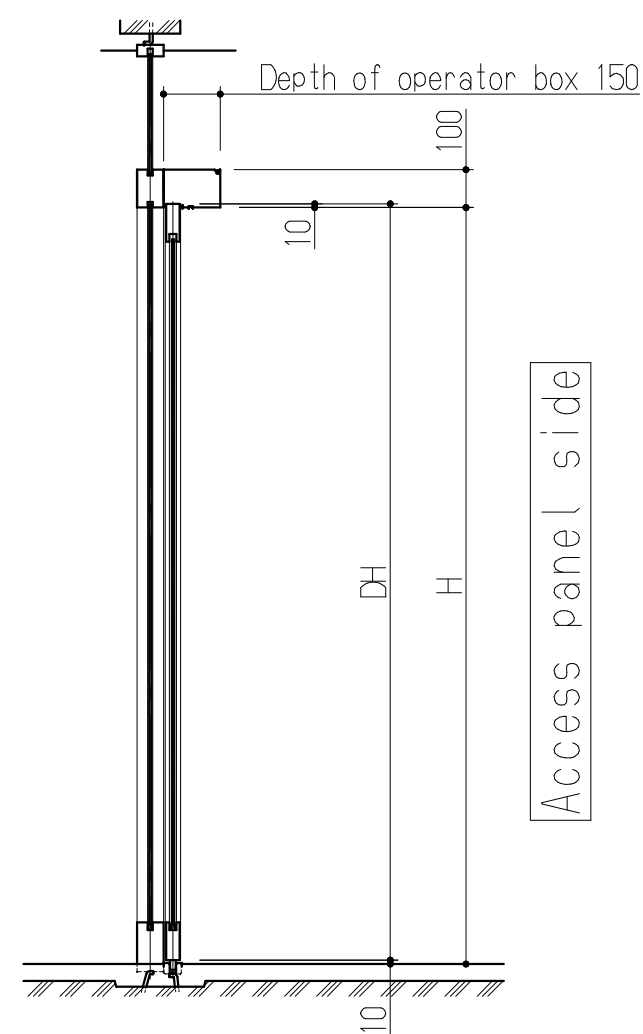


View from Access panel side



Access panel side

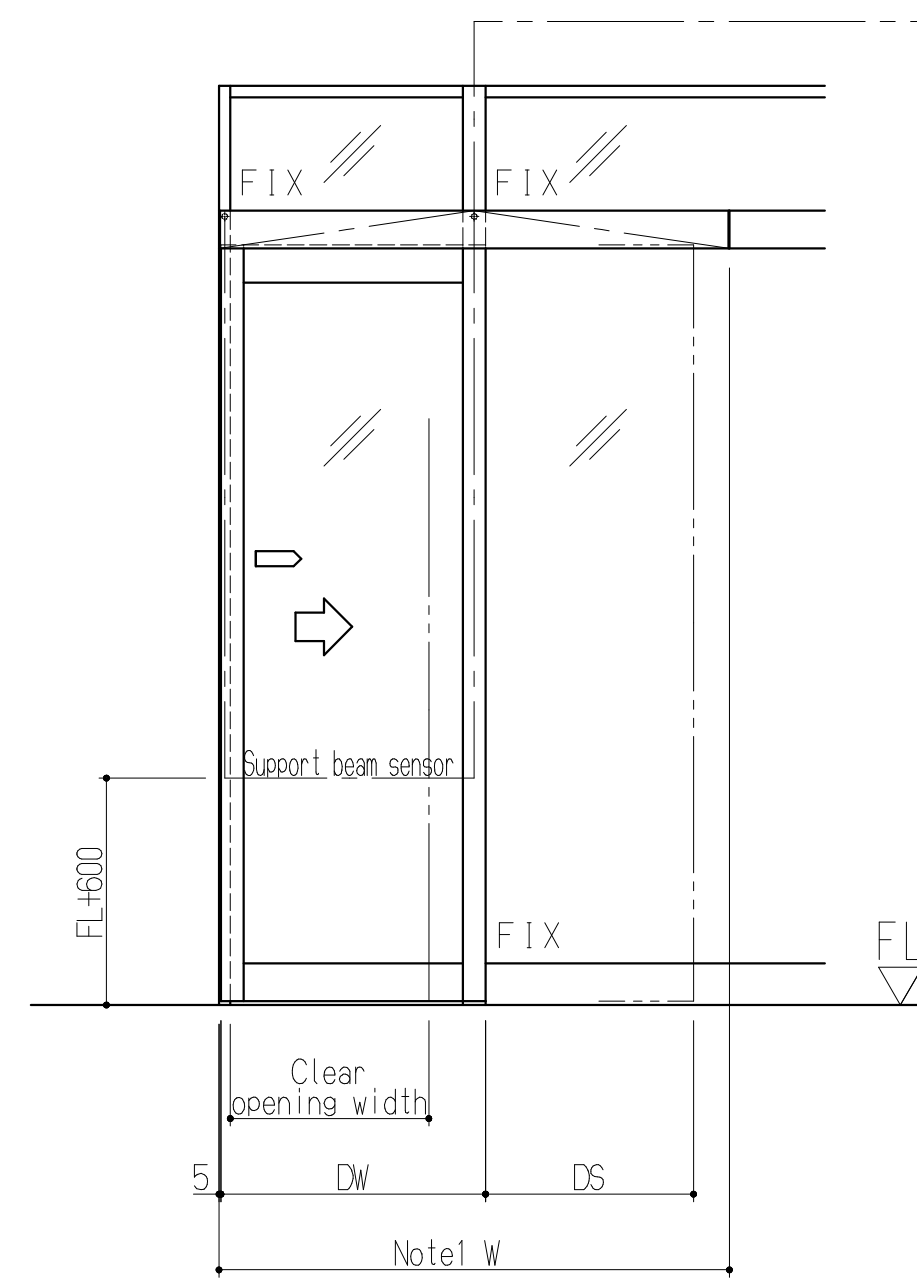
Single sliding  
(Right hand)



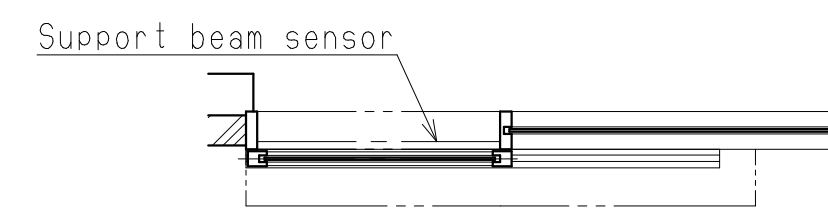
Access panel side

Power source 200~230VAC 2.5A  
Includes Earth line  
(Other work)

Power source switch  
(Other work)

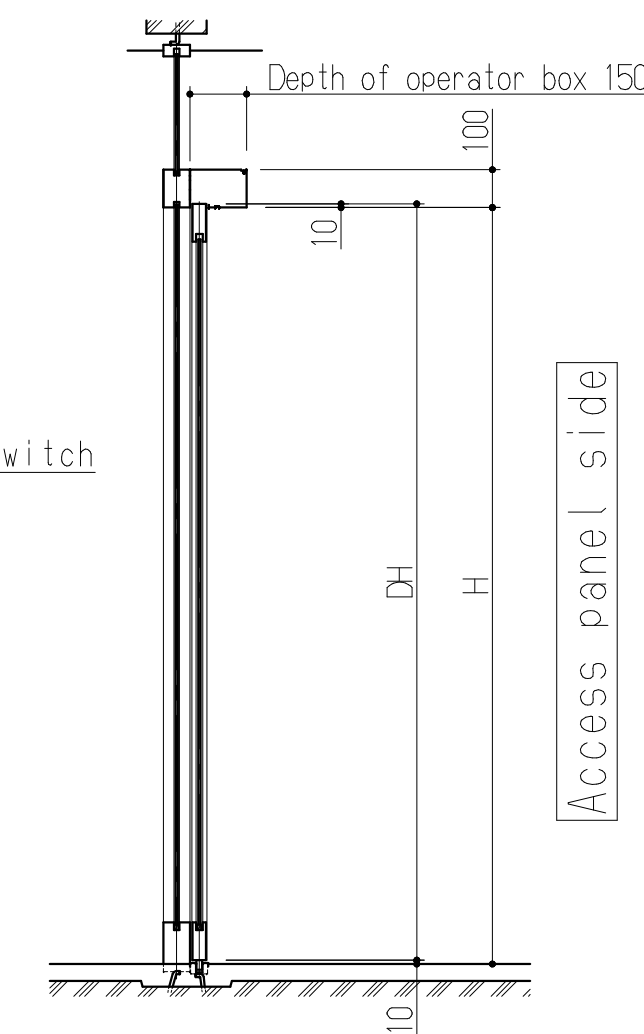


View from Access panel side



Access panel side

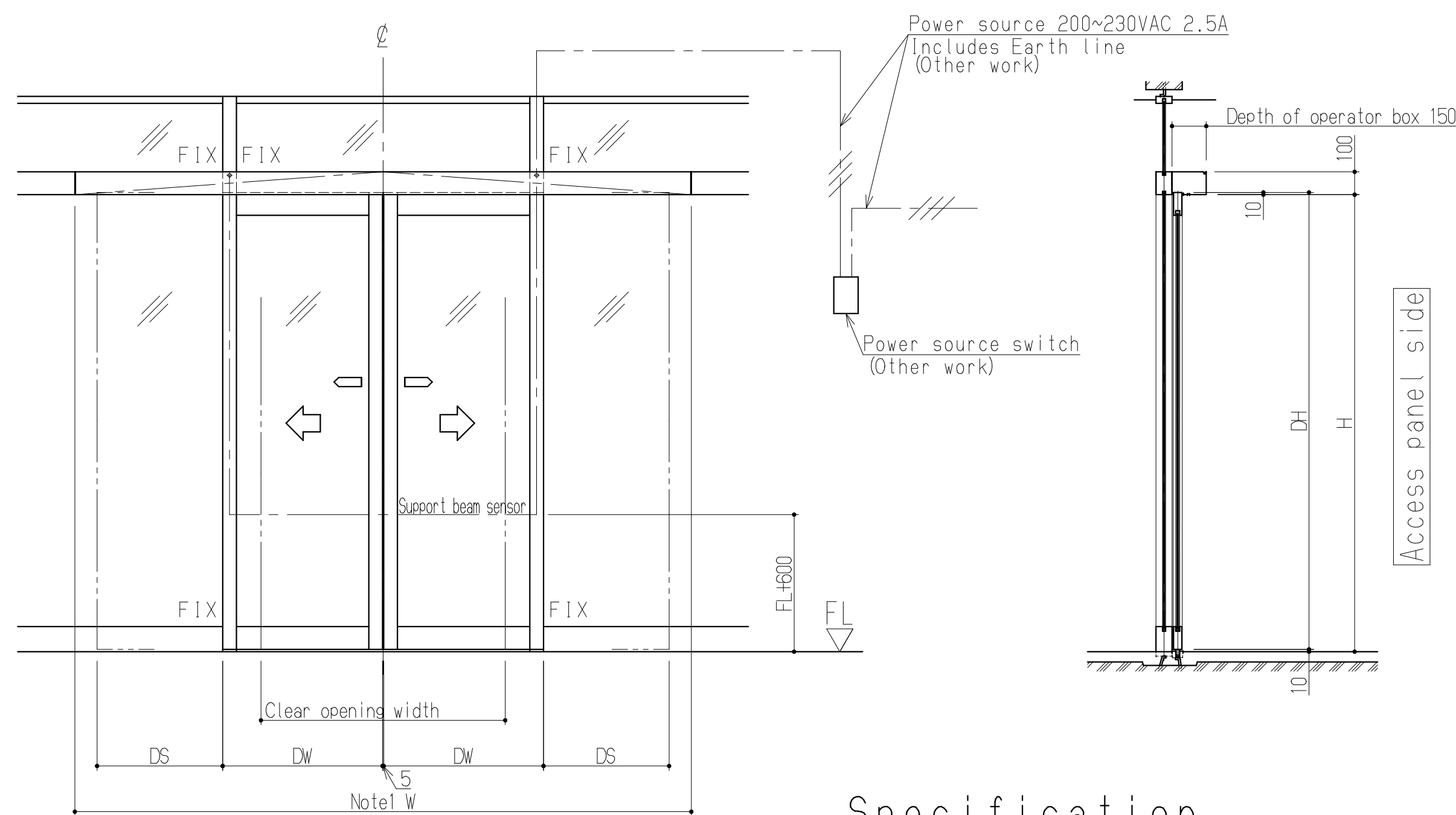
Single sliding  
(Left hand)



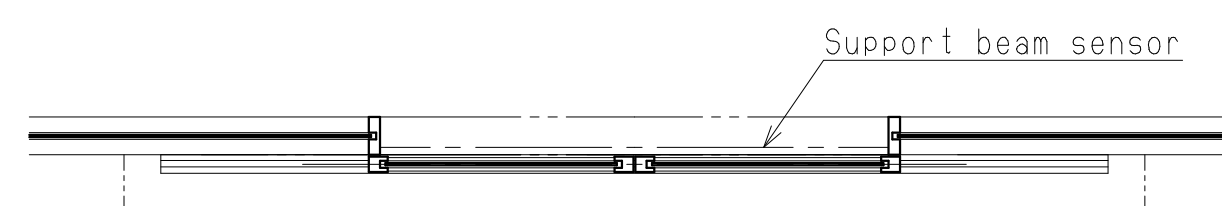
Access panel side

Remark

Note1.  
The dimensions of "W<sub>LS</sub>"  
are shown in the tables.



View from Access panel side



Access panel side

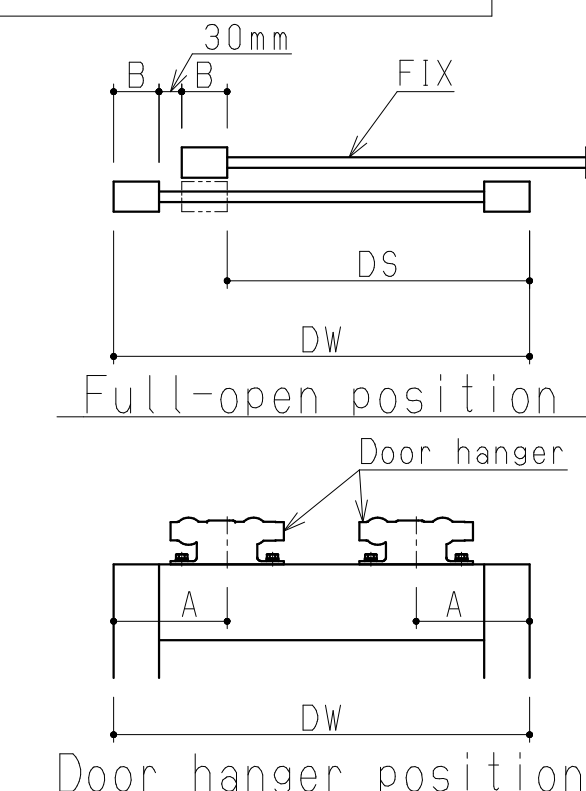
Bi-parting sliding

Specification

Opening method	Single sliding			Bi-parting			
Door operator	DS-60	DS-75	DS-150	DS-60	DS-75	DS-150	
Specification	Surface mount						
Applicability	Door mass X Door q'ty (kg)	75x1	100x1	120x1	60x2	85x2	120x2
	Door area DWxDH (m <sup>2</sup> )	2.2	2.8	3.3	1.8	2.6	3.0
	Rate of DH/DW	4.0					
Average speed	0.1~0.6m/s			0.1~0.55m/s			
Power supply	200~230VAC•2.5A						
Maximum operable wind speed	15m/s or less						

DS-S-HM										DS-S-EN (HM)									
FRAME DOOR					TEMPERED GLASS DOOR					FRAME DOOR					TEMPERED GLASS DOOR				
W <sub>L</sub>	W <sub>R</sub>	DW	DS #1	A	W <sub>L</sub>	W <sub>R</sub>	DW	DS #2	A	W <sub>L</sub>	W <sub>R</sub>	DW	DS #1	A	W <sub>L</sub>	W <sub>R</sub>	DW	DS #2	A
1350	1450	700	550	150	1500	1600	700	700	100	1500	1550	700	550	150	1650	1700	700	700	100
1550	1650	800	650	150	1700	1800	800	800	100	1700	1750	800	650	150	1850	1900	800	800	100
1750	1850	900	750	150	1900	2000	900	900	100	1900	1950	900	750	150	2050	2100	900	900	100
1950	2050	1000	850	150	2100	2200	1000	1000	100	2100	2150	1000	850	150	2250	2300	1000	1000	100
2150	2250	1100	950	150	2300	2400	1100	1100	100	2300	2350	1100	950	150	2450	2500	1100	1100	100
2350	2450	1200	1050	150	2500	2600	1200	1200	100	2500	2550	1200	1050	150	2650	2700	1200	1200	100
*1 When "B=60mm" DS=DW-(2B+30)					*2 DS=DW					*1 When "B=60mm" DS=DW-(2B+30)					*2 DS=DW				

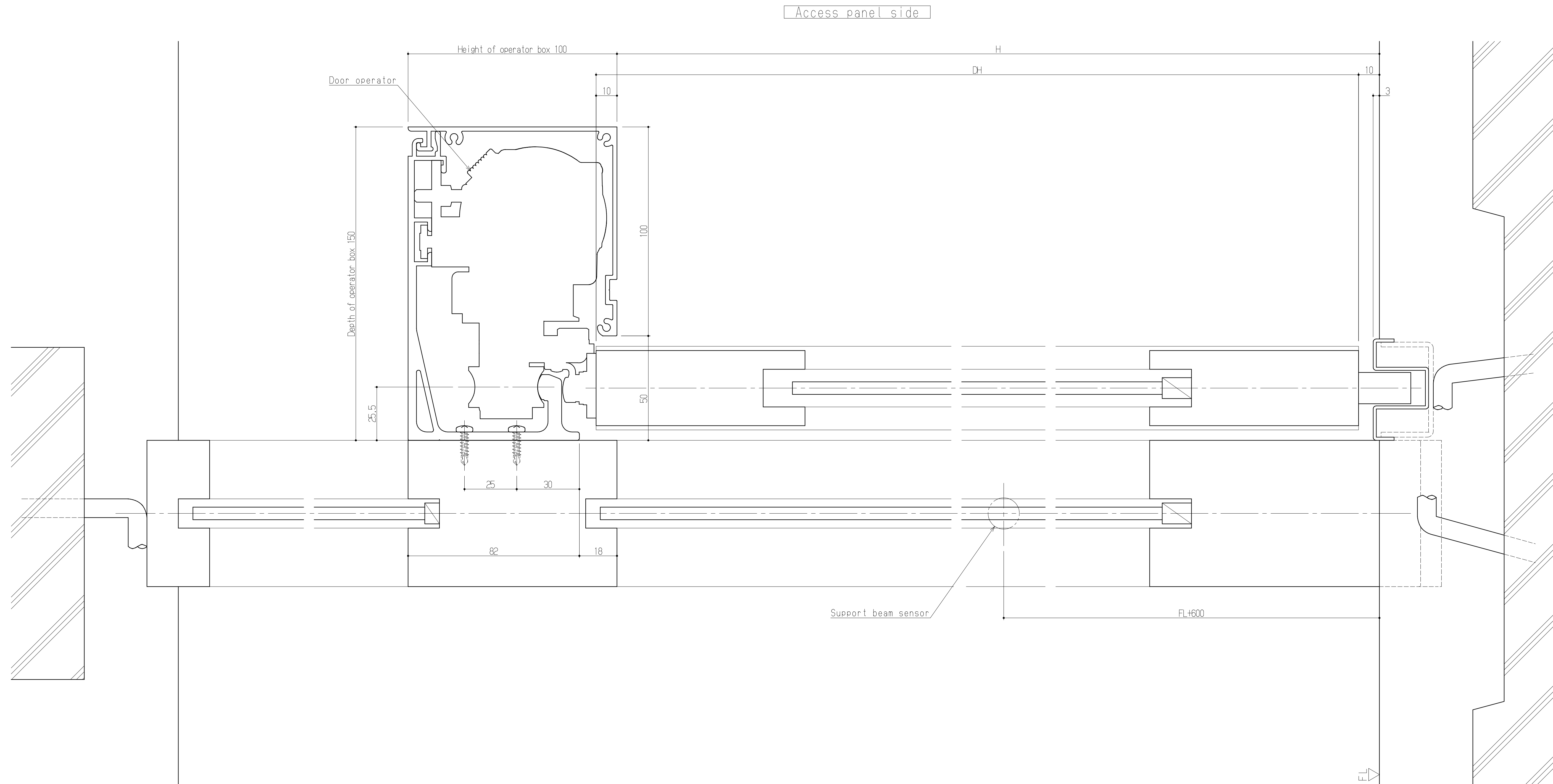
DS-S-HM					DS-S-EN (HM)										
FRAME DOOR		TEMPERED GLASS DOOR			FRAME DOOR		TEMPERED GLASS DOOR								
W	DW	DS #1	A	W	DW	DS #2	A	W	DW	DS #1	A	W	DW	DS #2	A
2700	700	550	150	3000	700	700	100	3000	700	550	150	3300	700	700	100
3100	800	650	150	3400	800	800	100	3400	800	650	150	3700	800	800	100
3500	900	750	150	3800	900	900	100	3800	900	750	150	4100	900	900	100
3900	1000	850	150	4200	1000	1000	100	4200	1000	850	150	4500	1000	1000	100
4300	1100	950	150	4600	1100	1100	100	4600	1100	950	150	4900	1100	1100	100
4700	1200	1050	150	5000	1200	1200	100	5000	1200	1050	150	5300	1200	1200	100
*1 When "B=60mm" DS=DW-(2B+30)				*2 DS=DW				*1 When "B=60mm" DS=DW-(2B+30)				*2 DS=DW			



1, All drawings herein are subject to change without notice.  
2, For further details, please contact NABCO sales distributors.

Drawing of DS-S-HM, DS-S-EN (HM)  
Surface mount (Elevation)  
Scale 1:20

-	2014.09.XX
改訂No.	改訂日時
番号	
1DK124742	



Notice

- 1, All drawings herein are subject to change without notice.
- 2, For further details, please contact NABCO sales distributors.

Drawing of DS-S-HM, DS-S-EN (HM)  
 Surface mount (Section)  
 Scale 1:1

-	2014.09.XX
改訂No.	改訂日時
番号 NO.	
1DK124742	