

V-TL Telescopic Door

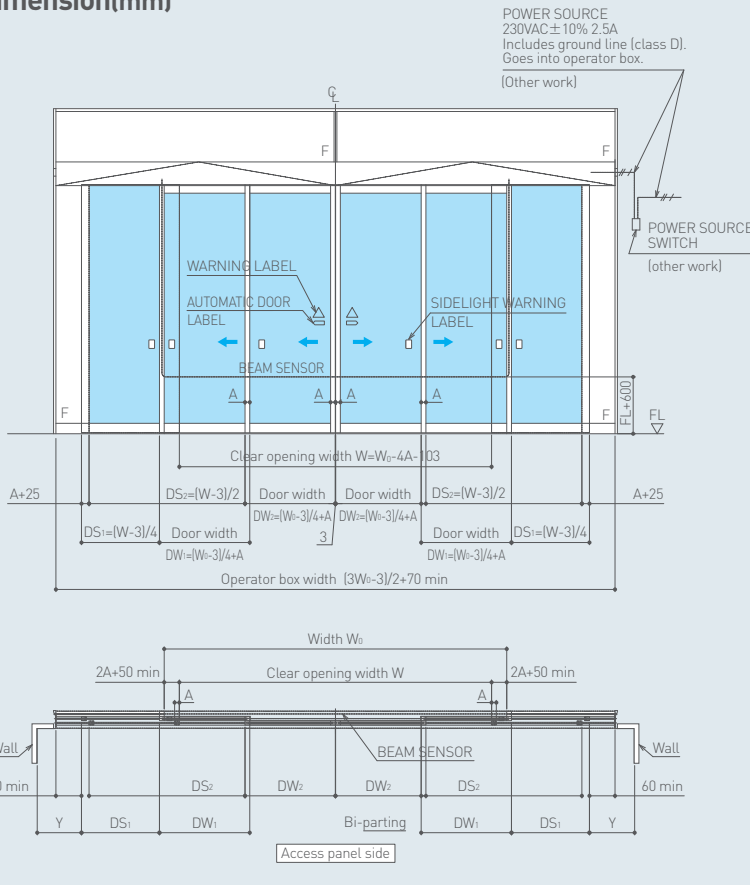


Even when the frontage is narrow, the door opening is as wide as possible.

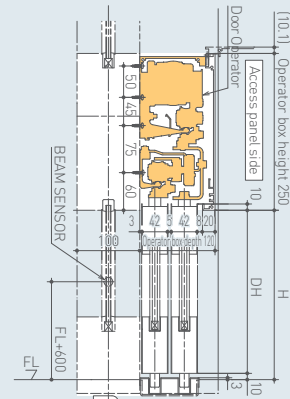
- Telescopic door opens 1.3 times wider than standard sliding door and provides a remarkable solution for a limited space.



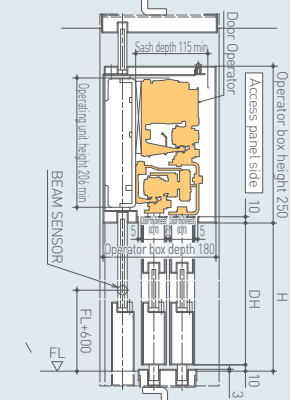
Dimension(mm)



Surface mounted type



Flat bar mounted type



Specifications

Door Type	Single			Bi-Parting		
	V-60TL	V-85TL	V-150TL	V-60TL	V-85TL	V-150TL
Product Name	V-60TL	V-85TL	V-150TL	V-60TL	V-85TL	V-150TL
Geared Motor Type	VS-60	VS-85	VS-150	VS-60	VS-85	VS-150
Applicable Door Mass (kg) x Door Quantity *1	50×2	65×2	100×2	40×4	55×4	100×4
Applicable Door Area : DW x DH (m) : DW×DH(m ²)	1.6	2.1	2.4	1.4	1.9	2.2
Applicable Door Width : DW (mm)	500~600	500~800	500~1000	500~550	500~650	500~1000
Ratio of Door Height / Width : DH / DW *2	4.2			4.2		
Required Power Capacity	230VAC ± 10% 2.5A *3			230VAC ± 10% 2.5A *3		
Door Operation Speed (m/sec)	0.1-0.7 *4			0.1-0.7 *4		
Wind Load (m/sec)	7m/s or less *5	15m/s or less	15m/s or less	7m/s or less *5	15m/s or less	15m/s or less

*1 The door should be used under conditions where the door unit weight will not exceed the value defined in the specification. If the weight exceeds the specification, malfunction or accident will occur.

*2 The unit door aspect ratio should not exceed the value defined in the specification. If the aspect ratio exceeds the specification, the specified performance will be impaired.

*3 With a transformer specified by NABCO

*4 The speed varies according to the door weight or site environment.

*5 V-60TL is for interior use only.