

Specification

Opening Method	Single sliding				Bi-parting			
	DS-60	DS-75	DS-150	F type	DS-60	DS-75	DS-150	F type
Door Operator	N type				N type			
* Specification	F type				F type			
Applicable	75kgx1	100kgx1	120kgx1	150kgx1	60kgx2	85kgx2	120kgx2	150kgx2
Door Mass x Door q'ty	2.2m ²	2.8m ²	3.3m ²		1.8m ²	2.6m ²	3.0m ²	
Door area DW XDH (m ²)	Rate of DH/DW 4.0							
Average speed	0.1~0.6m/s			0.1~0.55m/s		0.1~0.55m/s		0.1~0.5m/s
Power supply	100VAC*5A							
Maximum Operable Wind Speed	15m/s or less							

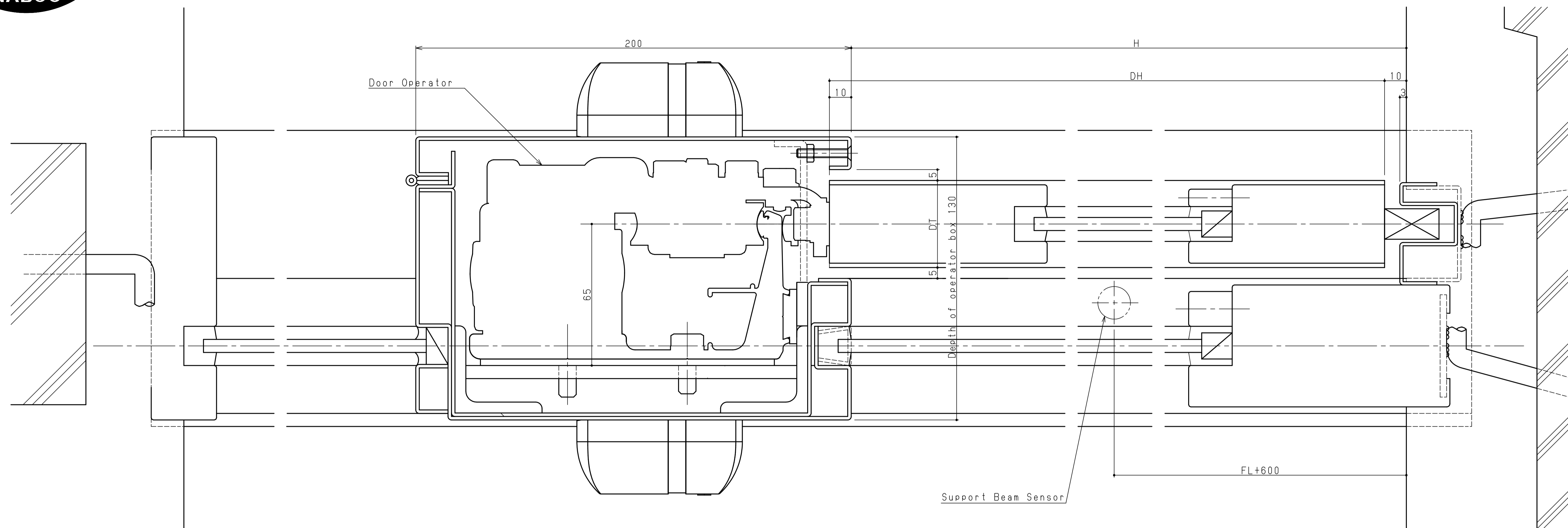
* Mass per door 120kg or less → Concealed flat bar mount N type
120kg or more → Concealed flat bar mount F type
The section between N type and F type is different.

Notice

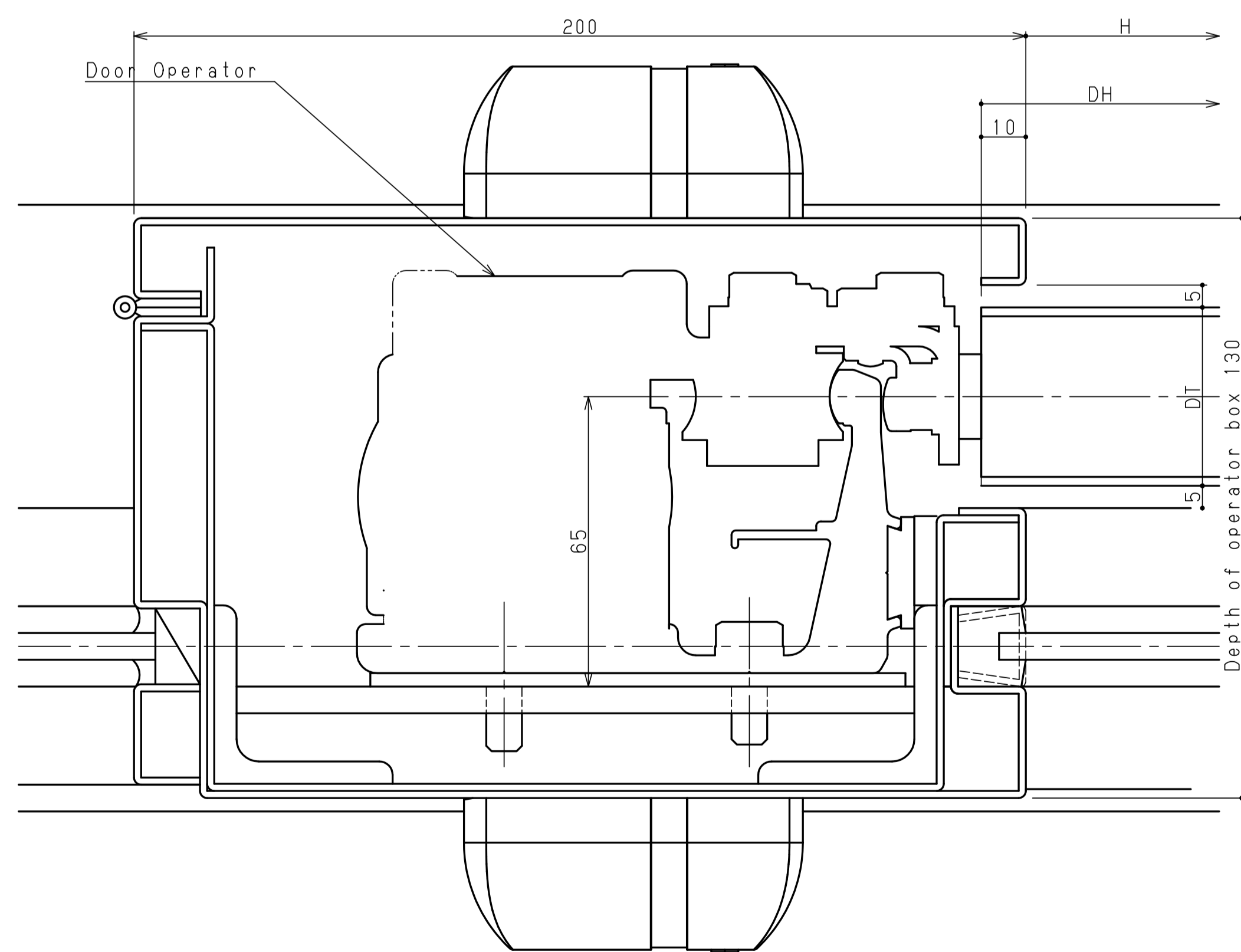
- All drawings herein are subject to change without notice.
- For further details, please contact NABCO sales distributor.

Drawing of DS-60/75/150
for stainless steel sash
(Elevation)
Scale 1:20

改訂No.	改訂日時
番号 No.	
1HP102558-01	
Nabtesco Nabtesco Corporation	



F type Installation



N type Installation

※ Mass per door 120kg or less → Concealed flat bar mount N type
 120kg or more → Concealed flat bar mount F type
 The section between N type and F type is different.

Notice

- 1, All drawings herein are subject to change without notice.
- 2, For further details, please contact NABCO sales distributor

Drawing of DS-60/75/150
 for stainless steel sash
 (Section)
 Scale 1:1

1	2008.8.18
改訂No.	改訂日時
番号 No.	
1HP102558-02	
Nabtesco Nabtesco Corporation	

参考図書