

Specification

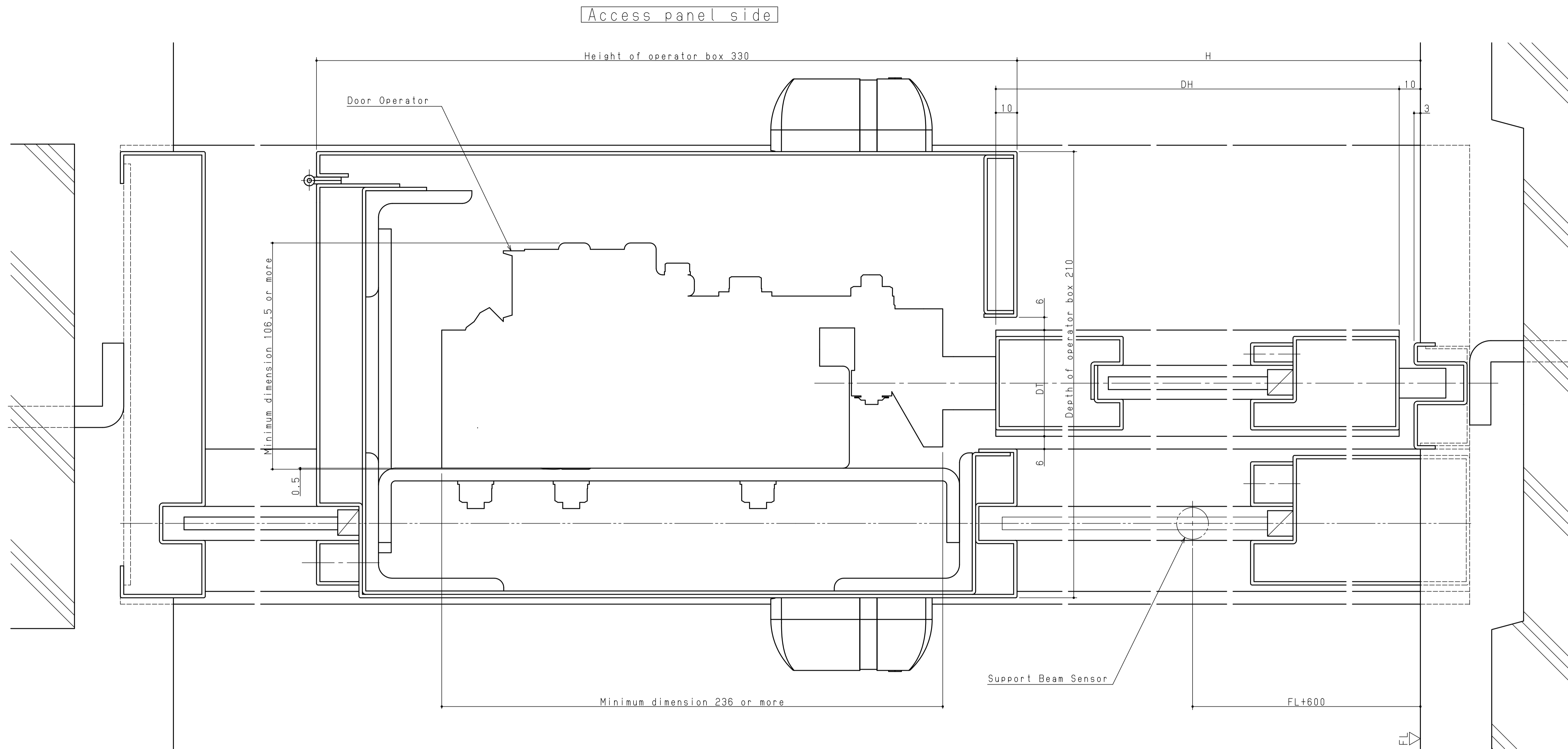
Door Operator	DS-250	DS-250
Opening Method	Bi-parting	Single sliding
Applicable Door Mass x Door q'ty	250x2	500x1
Door area DW XDH (㎡)	5.0	9.3
Applicable Door Width:DW (mm)	900~1650	1200~3100
Rate of DH/DW	3.0	
Average speed	0.1~0.44m/sx2	0.1~0.44m/s
Power supply	100VAC・10A	
Maximum Operable Wind Speed	15m/s or less	

Notice

- 1, All drawings herein are subject to change without notice.
- 2, For further details, please contact NABCO sales distributor.

Drawing of DS-250
(Elevation)
Scale 1:20

1	2008.8.18
改訂No.	改訂日時
番号 NO.	
1HP122532-01	
Nabtesco Nabtesco Corporation	



Notice

- 1, All drawings herein are subject to change without notice.
- 2, For further details, please contact NABCO sales distributors.

Drawing of DS-250
 (Section)
 Scale 1:1

改訂No. 番号 NO.	改訂日時
1HP122532-02	
Nabtesco Nabtesco Corporation	

参考図書